



**Iowa Wild**

---

# **Social Narrative**

---



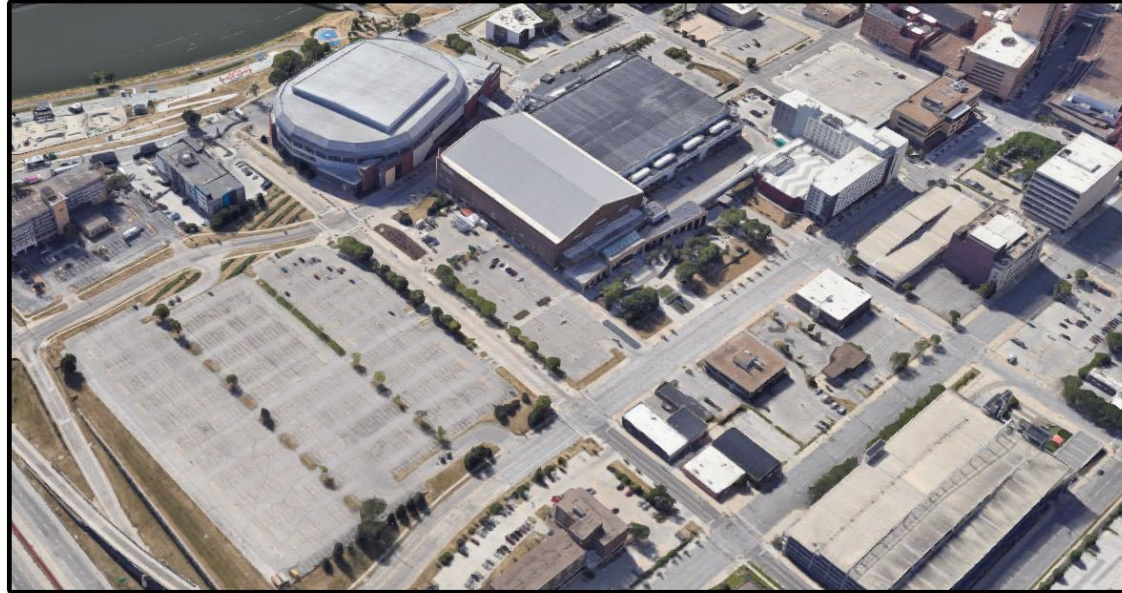
**I am going to an Iowa Wild game.**



**The Wild play at Wells Fargo Arena.**

There are multiple parking options if I drive to the game.

Visit [ridedart.com](https://www.ridedart.com) for public transit information.



#### FROM THE NORTH

Follow I-235 West into downtown Des Moines and take the 3rd Street exit to the Iowa Events Center. Parking is available on-site, with additional street and ramp parking within walking distance of our complex.

#### FROM THE SOUTH

Merge onto the I-235 East exit and travel east towards downtown Des Moines. Take the downtown exit and proceed to the 3rd Street exit. Parking is available on-site, with additional street and ramp parking within walking distance of our complex.

#### FROM THE EAST

Headed west on I-80, take I-235 West exit & continue towards downtown Des Moines. Take the 3rd Street exit (Downtown Des Moines) and go south to the Iowa Events Center complex. Parking is available on-site, with additional street & ramp parking within walking distance of our complex.

#### FROM THE WEST

Headed east on I-80, take the I-235 East exit & continue towards downtown Des Moines. Take the Iowa Events Center exit (3rd Street) and turn right. Parking is available on-site, with additional street and ramp parking within walking distance of our complex.

#### Skywalk Connection

Street parking is available throughout downtown with the convenience of the ParkDSM mobile parking app and many buildings, including Wells Fargo Arena, are connected by a climate controlled skywalk system.

#### Payment Options

As of July 1, 2023 parking costs \$12 per car/truck. Prices may increase for large trucks, RVs, and busses.

#### Prepay Parking

Fans coming to a game can pre-pay and reserve their parking spot for an upcoming event with ParkMobile

#### ADA Parking

ADA Accessible parking is available at the Iowa Events Center by entering the lot south of Crocker Street, next to Community Choice Convention Center.

#### Entrances

Three entrances are accessible to Wells Fargo Arena: **South Entrance** (corner of 3rd and Center): This entrance includes the ticket office, where WILL CALL is located. **North Entrance** (corner of 3rd and Crocker): There are two separate entrances here, including a general public entrance and VIP entrance for suite holders, club seats, and loge boxes. **Skywalk Entrance**: Easiest entrance for people who park in a city parking garage.

**There are several gates to enter Wells Fargo Arena.**

**The North Entrance is located at 3<sup>rd</sup> and Crocker. This entrance is ADA accessible.**



**The Box Office is located inside the South Entrance at the corner of 3<sup>rd</sup> and Center.**

**This is where I can purchase or pick up tickets. This entrance is ADA accessible.**





**The Skywalk  
Entrance connects  
to HyVee Hall  
and is ADA  
accessible.**

**This entrance  
provides direct  
access to The Fort  
and Suite Level of  
the arena.**

**Bags, purses and backpacks are not allowed.  
Clutch, wristlet and wallets sized 12" x 6" x 12" or smaller  
are allowed and subject to inspection.**



**WELLS FARGO ARENA HAS  
IMPLEMENTED A CLEAR BAG  
POLICY FOR ALL EVENTS.**

---

**MAX SIZE: 12 IN. x 6 IN. x 12 IN.**

EXCEPTIONS WILL BE MADE FOR BAGS CONTAINING ITEMS REQUIRED  
FOR MEDICAL, FAMILY, OR CHILD CARE NEEDS.

\*Medical bags and diaper bags are allowed; however, they are required to pass through screening prior to entry.





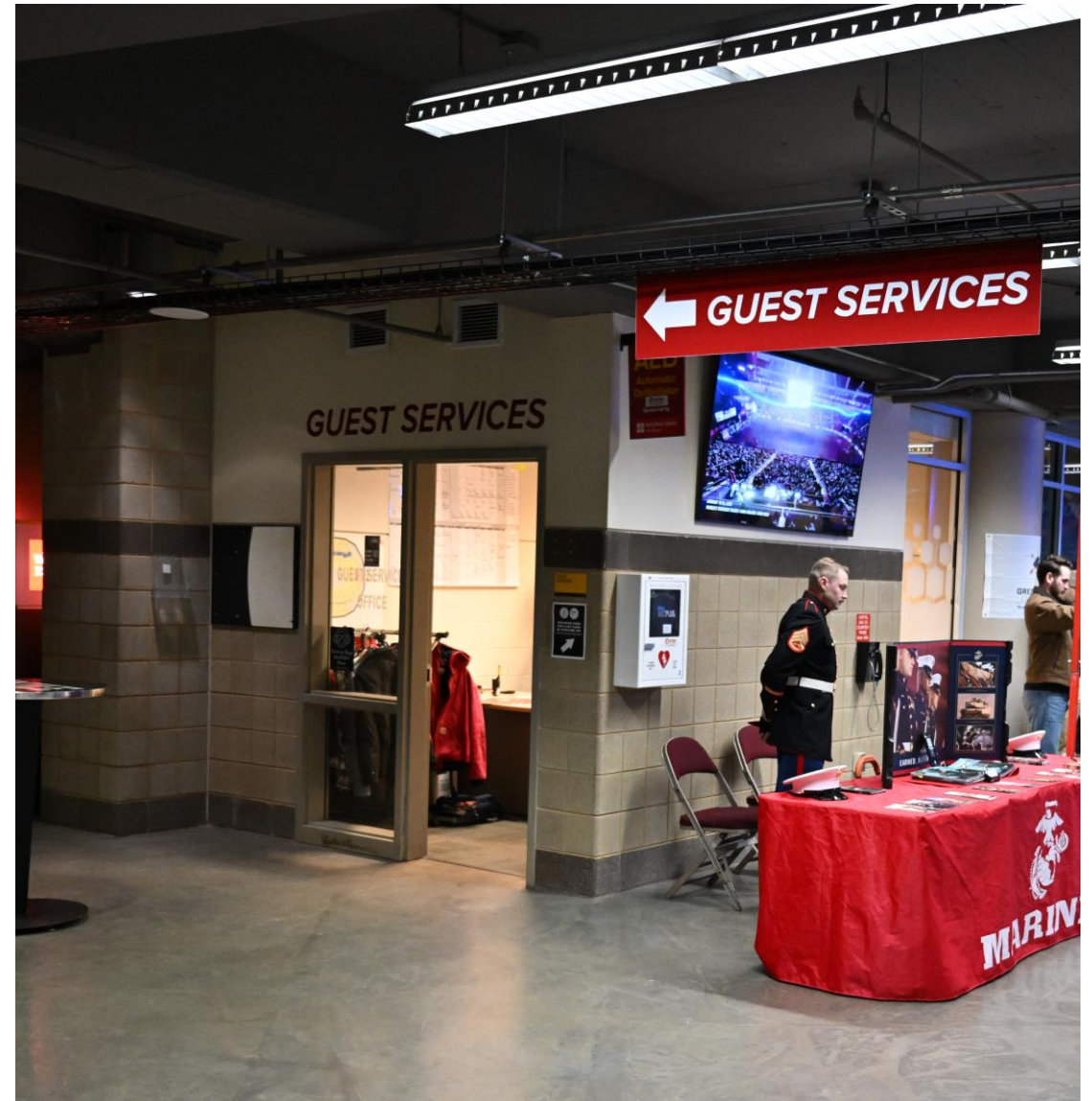
**After I enter a gate, I will go through a security checkpoint.**

**At the security checkpoint, I will be asked to empty any metal objects from my pockets (such as cell phone, keys, etc.) and pass through a metal detector.**

**Once I am in the arena,  
there are a number of  
things I can see and do.**

**If I would like to check out  
sensory tools to use during  
the Wild game, I can visit  
Guest Services.**

**It is located behind Section  
107, near the North  
Entrance.**





**The WildWear Store is located near the North Entrance. There is also a pop up shop near the South Entrance.**

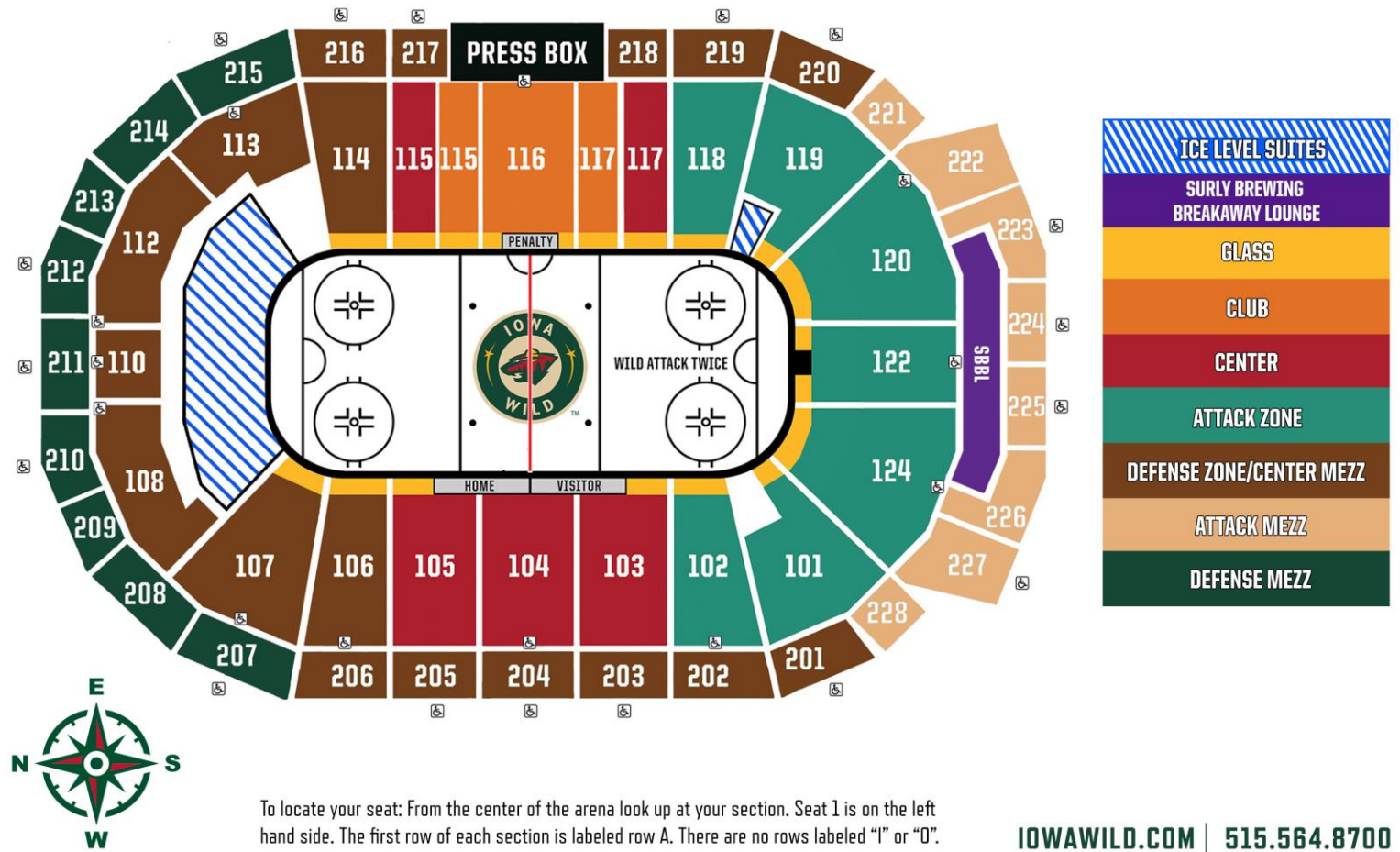
**These stores sell Iowa Wild apparel and merchandise.**



# IOWA WILD

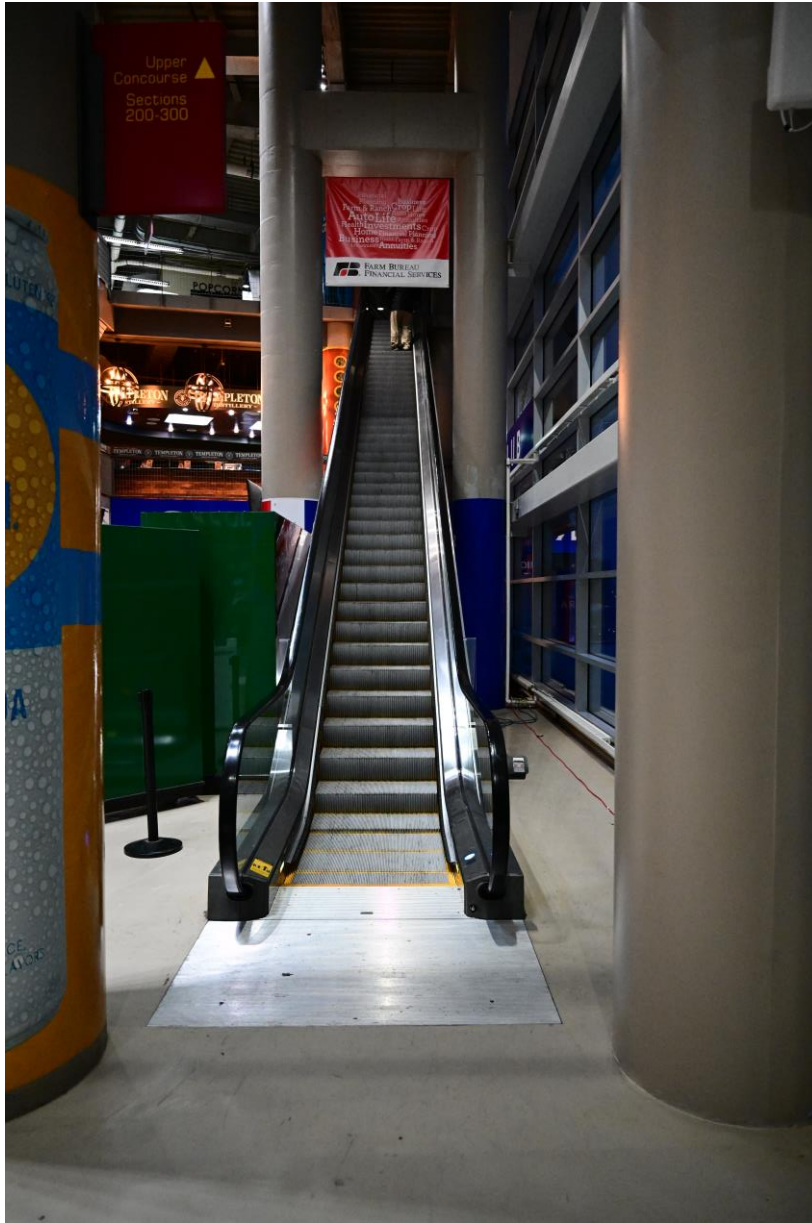


When I am ready to find my seat, I can find my section using the Wells Fargo Arena seating map.



To locate your seat: From the center of the arena look up at your section. Seat 1 is on the left hand side. The first row of each section is labeled row A. There are no rows labeled "I" or "O".

IOWAWILD.COM | 515.564.8700



**To get from the concourse on the 100 Level to the Club or 200 Level, I can use the stairs, escalator or elevator.**

**From my seat,  
I can enjoy the  
game and cheer  
for the Wild.**

**If the game is  
too loud or I need  
to move around,  
I can return to  
the concourse.**

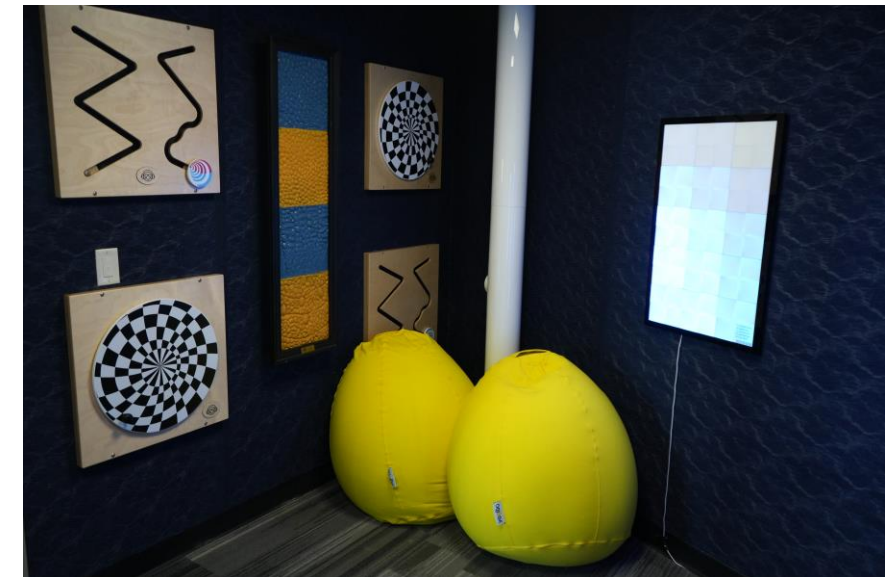
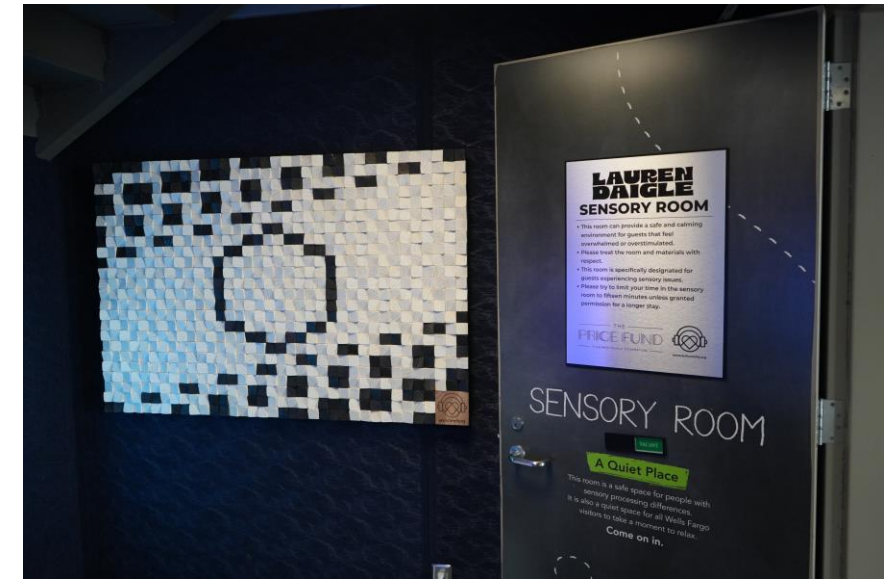




**When the Wild score a goal, fans will cheer, a horn will sound and music will play. At times, the arena will be loud.**

**Headphones and earplugs are available at the Guest Services desk if I am concerned about the amount of noise.**

**If you ever need a break from the game and want to visit a quiet location, check out the Lauren Daigle Sensory Room outside section 117.**





**If I need assistance,  
there are many  
people who can  
help me.**

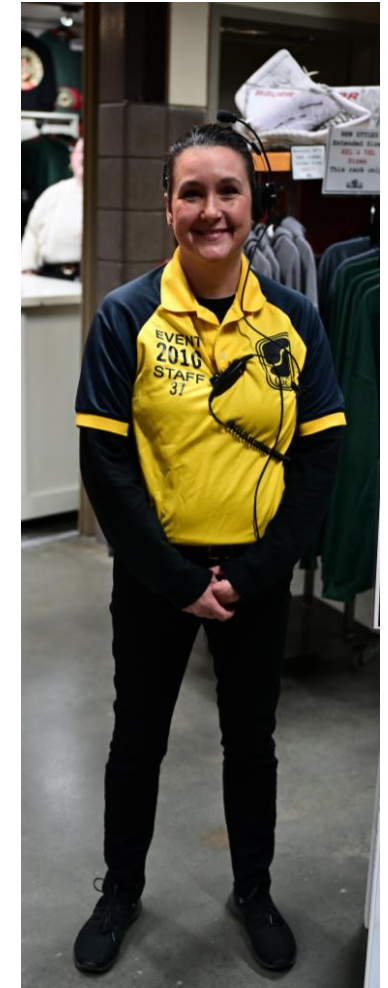
**Staff will have  
uniforms and name  
tags to help me  
identify them.**



**Guest  
Services**



**Police  
Officer**



**Security  
Guard**